



**STEPHEN SUTTON HOUSE
RESIDENTIAL PROVISION
STATEMENT OF PURPOSE**

CHILDREN FRIENDLY VERSION



December 2024

CONTENTS

- **About residential service at Lindsworth School3**
- **Referrals 4**
- **Premises.....4**
- **Our aims and objectives..... 6**
- **Safeguarding 7**
- **Our team 8**
- **Complaints and compliments 9**

About residential service at Lindsworth School

Residential accommodation is available during the school week for up to a maximum of four nights per week, Monday to Thursday. This provision is for Key stage 2, 3 &4. We can accommodate up to 12 residents at a time.



The residential provision at Lindsworth is seen as an additional support to both the young person and his parents/carers. It offers structure, consistency and routines, which afford the young person reassurance and stability. Residents will be encouraged to develop a wide range of life skills and abilities that they can utilise in a variety of situations.

Referrals

Referrals to use residential provision can be made by those who understand needs of the pupil. The referral will be picked up by the management and senior team and the process would involve the individual and family/ carers from the beginning to the time when transition is confirmed.

During this time, there is an opportunity for young person and those who support them, to ask questions and be introduced to the site at arranged time in advance.

All admissions will be given a start date following consultation with parents/carers and school.

All the information gathered from initial meetings and consultation will be used to inform the pupil's Placement Plan. Continuous and ongoing assessment throughout the placement will be made and reviewed each term.

Premises

There are single and double bedrooms.

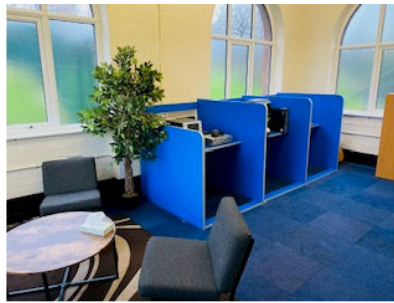
The double bedrooms can be occupied by one person at a time so they can be shared throughout the week between two residents.



There is communal area combined with Dining Room.



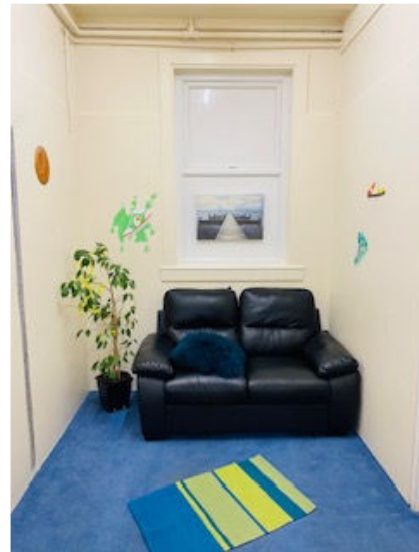
Computer and Game Room.



There is kitchen accessible to all.



Reflection room



Our aims and objectives

- to provide a safe, stable and secure environment,
- to provide opportunities to learn new skills in order to become more independent,



- to provide a safe environment where young people feel that they are 'listened to' and can contribute their views and opinions,
- to help young people develop skills and strategies that enable them to function in a positive way in all group settings and with both peers and adults.



Safeguarding

The school has clear guidelines and policies as defined by Birmingham LEA Safeguarding Procedures.

The Residential Principal Care Coordinator Ela Ksiazkiewicz is designated child protection within residential setting. She monitors all aspects of Child Protection concerns. She holds regular meetings with the Head teacher and keeps her informed of all communications.

The safeguarding team works together to ensure safety of all children.



LINDSWORTH SCHOOL
YOUR SAFEGUARDING TEAM
'Safeguarding is EVERYONE'S responsibility'

 DESIGNATED SAFEGUARDING LEAD KS2 KATE KNUTTON KS2 Pastoral Manager	 DESIGNATED SAFEGUARDING LEAD KS3 + KS4 IAN McMAHON Asst. Headteacher			
DEPUTY SAFEGUARDING LEADS				
 KATE BEALE Headteacher	 JULIE COOMBS Deputy Headteacher	 COURTNEY BALLARD Asst. Headteacher	 SIMON RICHARDSON Asst. Headteacher	 DEAN WILLIAMS Pastoral Lead

If you feel unsafe in life, please tell someone: your PAL, your Teacher or your Safeguarding Team

OUR TEAM

Within the residential unit our current staff team consists of:

- 1 Residential Schools Principal Care Manager.
- 2 Residential Team Leaders
- 1 housekeeper
- Evening Sessional Staff (Pastoral, Learning Support and Teachers)

Residential Principle Care- Coordinator



Ela Ksiazkiewicz

e.ksiazkiewicz@lindsworth.bham.sch.uk

0121 6935363 ext. 114

Residential Team Leaders

a.hoyte@lindsworth.bham.sch.uk

0121 6935363 ext. 113



Adrian Hoyte Thelma Griffiths

t.griffiths@lindsworth.bham.sch.uk

0121 6935363 ext. 113



Complaints and compliments

There will be occasions when the decisions made will conflict with the views of young people. It is important that the young people, parents and any other relevant adults understand the decision making process and whenever possible are consulted and included in the decisions taken.



The school has a complaints procedure which aims to accomplish the following objectives:

- To give pupils access to a complaints and representation procedure.
- To acknowledge that young people, their parents and other interested parties have a right complain if they have concerns.
- To monitor areas within the Home/school which require improvement
- To develop a procedure which individuals can easily use.

There is a children friendly copy of complaints and compliments available and can be provided upon request.

The full version of Statement of Purpose is available on School website.